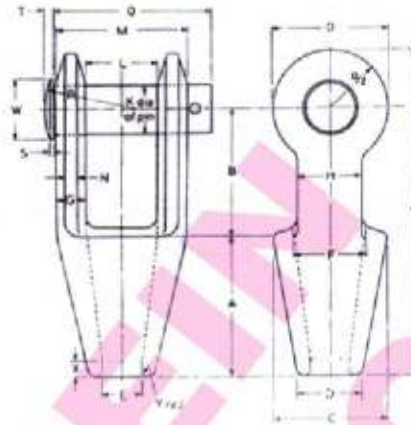
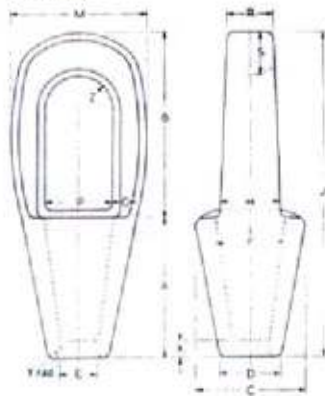


# Spelter Sockets

To B.S.S. 463, 1958



CLOSED TYPE WIRE ROPE SOCKET

DIMENSIONS IN INCHES

Nominal size (dia. of rope) inches	Dia. of Rope mm	A	B	C	D	E	F	G	H	J	M	P	R	S	X	Y	Z	Proof load†	Maximum recommended working load		
					dia.	dia.	dia.	min.							rad.	rad.		tons	tons		
5/16	8	1 1/16	2	1 1/16	5/16	3/16	2/16	3/16	5/16	3 11/16	1 1/16	2 1/16	2 1/16	2 1/16	1/16	1/16	1/16	1 1/2	1 1/2	1 1/2	
3/8	9	2	2 1/2	1 1/2	5/8	3/8	2 1/8	3/8	5/8	4 1/8	1 1/2	2 1/2	2 1/2	2 1/2	1/8	1/8	1/8	2	2	2	
1/2	11	2 1/2	3	2	3/4	1/2	2 1/4	1/2	3/4	4 1/2	1 3/4	3	3	3	1/4	1/4	1/4	2 1/2	2 1/2	2 1/2	
5/8	12	2 3/4	3 1/2	2 1/2	7/8	1/2	2 3/4	1/2	3/4	5 1/8	2 1/4	3 1/2	3 1/2	3 1/2	1/4	1/4	1/4	4	4	4	
3/4	14	3	4	3	1	3/4	3	1	1 1/4	5 3/8	2 3/4	4	4	3/4	3/4	3/4	4 1/2	4 1/2	4 1/2	2 1/2	
7/8	16	3 1/2	4 1/2	3 1/2	1 1/8	7/8	3 1/2	1 1/8	1 1/2	6 1/8	3	4 1/2	4 1/2	4 1/2	1/2	1/2	1/2	6	6	6	3
1	18	4	5	4	1 1/4	1	4	1 1/4	1 3/4	7	3 1/2	5	5	1/2	1/2	1/2	8 1/2	8 1/2	8 1/2	4 1/2	
1 1/8	22	4 1/2	5 1/2	4 1/2	1 1/2	1 1/4	4 1/2	1 1/2	2	7 1/2	4	5 1/2	5 1/2	1/2	1/2	1/2	11	11	11	5 1/2	
1 1/4	26	5 1/4	6 1/4	5 1/4	1 3/4	1 1/2	5 1/4	1 3/4	2 1/4	9 1/4	4 1/2	6 1/4	6 1/4	1/2	1/2	1/2	15	15	15	7 1/2	
1 1/2	28	6	7	6	2	1 3/4	6	2	3	10 1/2	5 1/2	7 1/2	7 1/2	1/2	1/2	1/2	19	19	19	9 1/2	
1 3/4	32	6 1/2	7 1/2	6 1/2	2 1/4	2	7	2 1/4	3 1/2	11 1/4	6 1/4	8 1/4	8 1/4	1/2	1/2	1/2	23	23	23	11 1/2	
2	36	7 1/4	8 1/4	7 1/4	2 3/4	2 1/4	8	2 3/4	4 1/4	13 1/4	7 1/4	10 1/4	10 1/4	1/2	1/2	1/2	28	28	28	14	
2 1/4	36	7 1/4	8 1/4	7 1/4	2 3/4	2 1/4	8	2 3/4	4 1/4	13 1/4	7 1/4	10 1/4	10 1/4	1/2	1/2	1/2	33	33	33	16 1/2	
2 1/2	40	8	9	8	3	2 1/2	9	3	5	15 1/4	8 1/4	11 1/4	11 1/4	1/2	1/2	1/2	38	38	38	19	

OPEN TYPE WIRE ROPE SOCKET

DIMENSIONS IN INCHES

Nominal size (Dia. of rope) inches	Dia. of Rope mm	A	B	C	D	E	F	G	H	J	K	L	M	N	O	Q	R	S	T	W	X	Y	Split cotter pin dia.	Proof load †	Maximum recommended working load
					dia.	dia.	dia.				dia.				dia.	rad.				dia.	rad.		tons	tons	
5/16	8	1 1/16	1 1/16	1 3/16	5/16	3/16	2/16	3/16	5/16	3 1/16	1 1/16	1 1/16	1 1/16	1 1/16	1 1/16	1 1/16	1 1/16	1 1/16	1 1/16	1 1/16	1 1/16	1 1/16	1 1/16	1 1/2	1 1/2
3/8	9	2	2	2 1/16	5/8	3/8	2 1/8	3/8	5/8	4 1/8	1 1/8	1 1/8	1 1/8	1 1/8	1 1/8	1 1/8	1 1/8	1 1/8	1 1/8	1 1/8	1 1/8	1 1/8	2	2	
1/2	11	2 1/2	2 1/2	2 3/8	3/4	1/2	2 1/4	1/2	3/4	4 1/2	1 3/8	1 3/8	1 3/8	1 3/8	1 3/8	1 3/8	1 3/8	1 3/8	1 3/8	1 3/8	1 3/8	1 3/8	2 1/2	2 1/2	
5/8	12	2 3/4	2 3/4	3 1/8	7/8	3/4	2 3/4	3/4	1	5 1/8	1 3/4	1 3/4	1 3/4	1 3/4	1 3/4	1 3/4	1 3/4	1 3/4	1 3/4	1 3/4	1 3/4	1 3/4	4	4	
3/4	14	3	3	3 1/4	1	3/4	3	1	1 1/4	5 3/8	1 3/4	1 3/4	1 3/4	1 3/4	1 3/4	1 3/4	1 3/4	1 3/4	1 3/4	1 3/4	1 3/4	1 3/4	4 1/2	4 1/2	
7/8	16	3 1/2	3 1/2	3 3/4	1 1/8	7/8	3 1/2	1 1/8	1 1/2	6 1/8	1 3/4	1 3/4	1 3/4	1 3/4	1 3/4	1 3/4	1 3/4	1 3/4	1 3/4	1 3/4	1 3/4	1 3/4	6	6	
1	18	4	4	4 1/4	1 1/4	1	4	1 1/4	1 3/4	7 1/4	1 3/4	1 3/4	1 3/4	1 3/4	1 3/4	1 3/4	1 3/4	1 3/4	1 3/4	1 3/4	1 3/4	1 3/4	8 1/2	8 1/2	
1 1/8	22	4 1/2	4 1/2	4 3/4	1 1/2	1 1/4	4 1/2	1 1/2	2	7 3/4	1 3/4	1 3/4	1 3/4	1 3/4	1 3/4	1 3/4	1 3/4	1 3/4	1 3/4	1 3/4	1 3/4	1 3/4	11	11	
1 1/4	26	5 1/4	5 1/4	5 1/2	1 3/4	1 1/2	5 1/4	1 3/4	2 1/4	9 1/4	1 3/4	1 3/4	1 3/4	1 3/4	1 3/4	1 3/4	1 3/4	1 3/4	1 3/4	1 3/4	1 3/4	1 3/4	15	15	
1 1/2	28	6	6	6 1/4	2	1 3/4	6	2	3	10 1/2	1 3/4	1 3/4	1 3/4	1 3/4	1 3/4	1 3/4	1 3/4	1 3/4	1 3/4	1 3/4	1 3/4	1 3/4	19	19	
1 3/4	32	6 1/2	6 1/2	6 3/4	2 1/4	2	7	2 1/4	3 1/2	11 1/4	1 3/4	1 3/4	1 3/4	1 3/4	1 3/4	1 3/4	1 3/4	1 3/4	1 3/4	1 3/4	1 3/4	1 3/4	23	23	
2	36	7 1/4	7 1/4	7 1/2	2 3/4	2 1/4	8	2 3/4	4 1/4	13 1/4	1 3/4	1 3/4	1 3/4	1 3/4	1 3/4	1 3/4	1 3/4	1 3/4	1 3/4	1 3/4	1 3/4	1 3/4	28	28	
2 1/4	36	7 1/4	7 1/4	7 1/2	2 3/4	2 1/4	8	2 3/4	4 1/4	13 1/4	1 3/4	1 3/4	1 3/4	1 3/4	1 3/4	1 3/4	1 3/4	1 3/4	1 3/4	1 3/4	1 3/4	1 3/4	33	33	
2 1/2	40	8	8	8 1/4	3	2 1/2	9	3	5	15 1/4	1 3/4	1 3/4	1 3/4	1 3/4	1 3/4	1 3/4	1 3/4	1 3/4	1 3/4	1 3/4	1 3/4	1 3/4	38	38	

† The proof loads specified are based on approximately two-fifths of the nominal breaking strength of 6 x 19 construction, 110/120 tons/sq. in. wire ropes as specified in Table 1, B.S. 302/621, 'Steel wire ropes for cranes, excavators and general engineering purposes.'

- NOTES. (1) For wire ropes of intermediate sizes, the next larger size of socket shall be used.  
 (2) Socket pins are suitable only for loads equally distributed throughout their lengths.



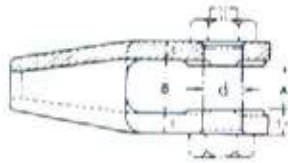
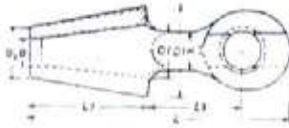
# WIRE ROPE SOCKETS

★ Material: S-25-C Forged

Unit: mm

## JIS Type Open Sockets

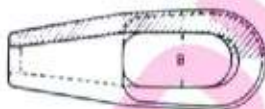
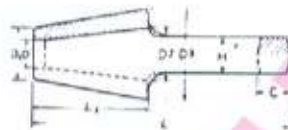
JIS-F-3432-78



W.R Dia	SWL (t)	Body													Pin		Wt/Pce (kg)
		D	D <sub>1</sub>	D <sub>2</sub>	D <sub>3</sub>	B	L	L <sub>1</sub>	L <sub>2</sub>	H	t	t <sub>1</sub>	A	Dia	screw		
16	2.6	20	26	37	55	40	193	88	74	24	9	13	32	25	M-22	1.54	
18	3.3	23	30	40	62	43	210	95	81	27	11	15	35	28	M-24	2.18	
20	4.1	25	35	44	69	47	227	103	86	30	13	18	37	31	M-27	2.93	
22	5.1	30	40	49	77	52	245	111	93	33	14	20	40	34	M-30	3.96	
24	5.9	32	44	52	84	56	262	119	98	36	16	22	44	37	M-33	5.21	
25	6.9	33	49	56	91	60	281	127	106	39	18	24	48	40	M-39	6.92	
28	8.0	36	53	61	98	65	298	135	111	41	19	26	51	43	M-42	8.41	
30	9.2	38	58	64	106	68	316	143	118	44	21	28	54	46	M-45	10.67	
32	10.5	40	62	68	113	72	335	151	125	47	23	31	56	49	M-48	12.94	
34	11.5	42	67	71	120	75	353	159	131	50	25	33	59	52	M-48	15.03	
36	13.0	44	71	76	127	80	373	168	138	53	26	35	62	55	M-52	17.93	
38	14.5	47	75	80	134	84	392	177	144	56	27	36	66	58	M-56	21.55	
40	16.5	49	80	84	141	88	413	186	153	59	29	38	70	61	M-56	24.63	
42	18.5	52	84	88	148	92	434	196	160	61	30	40	72	64	M-60	28.74	
45	21.0	54	92	96	162	101	474	214	175	67	33	44	79	70	M-68	38.00	
48	23.0	57	96	99	169	104	494	223	183	70	35	46	82	73	M-68	42.50	
50	25.5	60	99	104	176	109	516	233	191	73	36	48	85	76	M-72×6	47.70	
53	28.0	63	102	108	183	113	536	242	199	76	38	50	89	79	M-76×6	53.66	
56	31.5	66	108	114	193	119	567	256	211	80	40	53	93	83	M-80×6	64.00	
60	36.0	70	116	124	210	129	619	279	232	87	43	57	101	90	M-85×6	79.80	
63	40.0	74	120	128	216	133	641	289	240	90	44	58	105	93	M-85×6	86.30	

## Closed Sockets

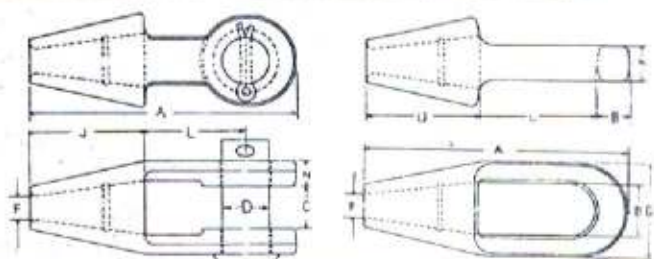
JIS-F-3432-78



W.R Dia	SWL (t)	Unit: mm										Wt/Pce (kg)
		D	D <sub>1</sub>	D <sub>2</sub>	D <sub>3</sub>	B	L	L <sub>1</sub>	H	C		
16	2.6	20	26	37	55	40	193	88	24	21	1.18	
18	3.3	23	30	40	62	43	210	95	27	24	1.64	
20	4.1	25	35	44	69	47	227	103	30	26	2.24	
22	5.1	30	40	49	77	52	245	111	33	29	2.95	
24	5.9	32	44	52	84	56	262	119	36	31	3.84	
25	6.9	33	49	56	91	60	281	127	39	34	4.89	
28	8.0	36	53	61	98	65	298	135	41	36	5.87	
30	9.2	38	58	64	106	68	316	143	44	39	7.37	
32	10.5	40	62	68	113	72	335	151	47	42	8.97	
34	11.5	42	67	71	120	75	353	159	50	44	10.8	
36	13.0	44	71	76	127	80	373	168	53	47	12.6	
38	14.5	47	75	80	134	84	392	177	56	49	15.0	
40	16.5	49	80	84	141	88	413	186	59	52	17.5	
42	18.5	52	84	88	148	92	434	196	61	54	20.3	
45	21.0	54	92	96	162	101	474	214	67	60	26.6	
48	23.0	57	96	99	169	104	494	223	70	62	30.5	
50	25.5	60	99	104	176	109	516	233	73	65	34.1	
53	28.0	63	102	108	183	113	536	242	76	67	38.0	
56	31.5	66	108	114	193	119	567	256	80	71	45.2	
60	36.0	70	116	124	210	129	619	279	87	78	58.3	
63	40.0	74	120	128	216	133	641	289	90	81	64.0	

## U.S.A Type

Open Spelter Sockets



Closed Spelter Sockets



(Forged Steel)

W.R Dia		F		J		open Type				closed Type					Wt/Pce	
in	mm	mm	mm	mm	mm	A	C	D	L	A	B	C	D	L	LBS	kg
1/2	6-7	7.9	51	109	17	17.4	39	0.9	0.41	108	11	36	20	46	0.8	0.23
3/8	8-10	11.1	51	117	20	20.6	44	1.3	0.59	117	14	43	24	52	1.0	0.45
1/2	11-13	14.3	63	141	25	25.4	51	2.3	1.0	139	17	51	28	58	1.8	0.82
5/8	14-16	17.4	76	171	31	30.1	63	3.9	1.9	162	20	66	35	65	3.1	1.6
3/4	18-19	20.6	86	201	38	34.9	76	6	2.7	193	27	76	41	77	5.1	2.3
7/8	20-22	24.6	101	235	44	41.2	89	10	4.7	225	33	92	47	90	7.8	3.7
1	24-26	28.5	114	268	51	50.8	101	15.5	7	254	36	104	57	103	12	5.7
1 1/8	28	31.7	127	300	57	57.1	114	24	11	282	39	114	63	116	16	7.5
1 1/4	32-35	38.1	139	335	63	63.5	127	32	15	312	43	127	70	130	23	10.9
1 3/8	38	41.2	152	384	76	69.8	152	46	21	358	51	136	79	155	28	12.7
1 1/2	40	44.4	165	412	76	76.2	165	55	25	390	54	146	82	171	36	16.4
1 3/4	42-48	50.8	190	463	89	88.9	178	85	39	444	55	171	89	198	58	26
2	52-54	50.1	216	546	101	95.2	228	125	57	501	62	193	96	224	80	36
2 1/4	56-60	63.5	228	597	114	107.9	254	165	75	549	73	216	108	247	105	48