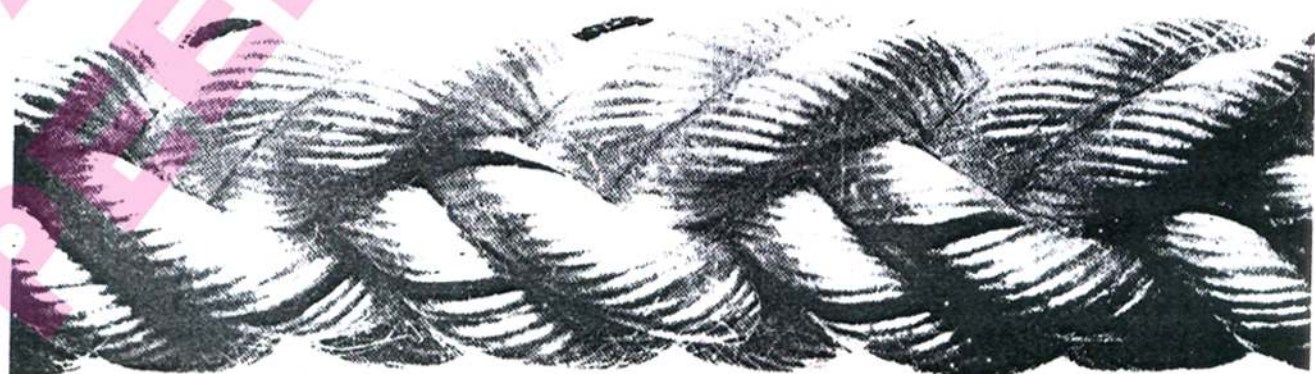
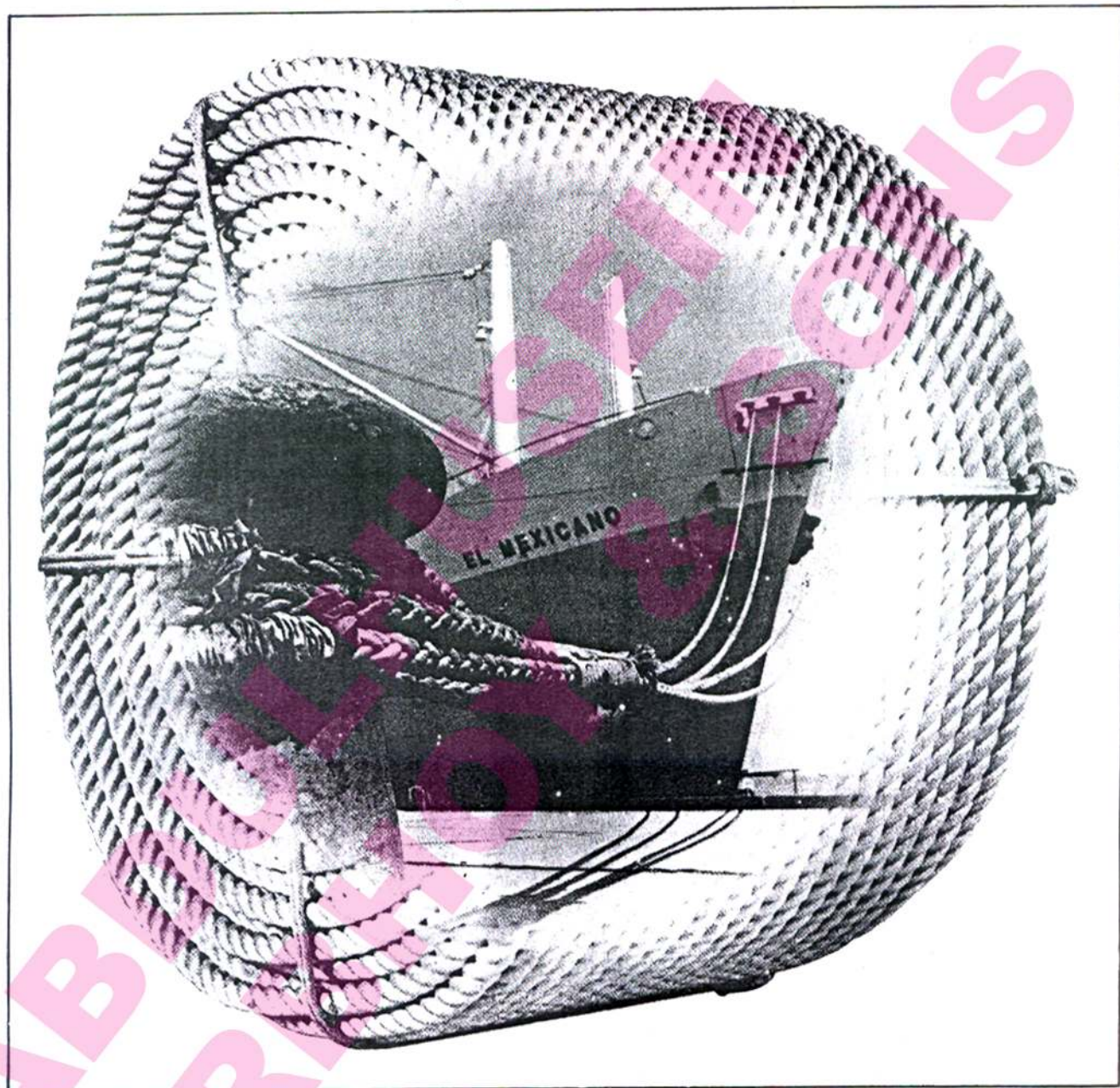


Marine Rope

Nylon • Polypropylene • Terylene • Manila



Supply all types of rope for Towing • Mooring • Lifting and General Useage.

Nylon/Polypropylene/Manila Rope Specifications Breaking Load & Weight

POLYPROPYLENE ROPE 3-STRAND

SIZE	WEIGHT	BREAKING LOAD
6 mm dia	3.6 kgs	—
8 mm dia	6.0 kgs	800 kgs
10 mm dia	9.6 kgs	1,000 kgs
12 mm dia	14.5 kgs	2,000 kgs
14 mm dia	19.5 kgs	2,600 kgs
16 mm dia	25.0 kgs	3,000 kgs
18 mm dia	32.0 kgs	4,000 kgs
20 mm dia	40.8 kgs	4,500 kgs
22 mm dia	47.0 kgs	5,700 kgs
24 mm dia	55.0 kgs	6,500 kgs
28 mm dia	75.0 kgs	9,000 kgs
32 mm dia	100.0 kgs	11,500 kgs
36 mm dia	130.0 kgs	14,000 kgs

NYLON ROPE 3-STRAND

WEIGHT	BREAKING LOAD
4.5 kgs	700 kgs
8.5 kgs	1,500 kgs
13.5 kgs	1,700 kgs
20.0 kgs	2,800 kgs
26.5 kgs	3,500 kgs
34.0 kgs	5,000 kgs
43.0 kgs	5,500 kgs
53.0 kgs	7,000 kgs
66.0 kgs	8,500 kgs
77.6 kgs	10,000 kgs
105.0 kgs	13,500 kgs
135.0 kgs	18,000 kgs
171.0 kgs	20,000 kgs

POLYPROPYLENE ROPE 8-STRAND

SIZE	WEIGHT	BREAKING LOAD
5" cir	160.0 kgs	17,000 kgs
6" cir	225.0 kgs	22,000 kgs
7" cir	305.0 kgs	26,000 kgs
8" cir	408.0 kgs	44,000 kgs
9" cir	510.0 kgs	50,000 kgs
10" cir	620.0 kgs	60,000 kgs
12" cir	909.0 kgs	75,000 kgs

NYLON ROPE 8-STRAND

WEIGHT	BREAKING LOAD
210.0 kgs	28,000 kgs
306.0 kgs	37,000 kgs
420.0 kgs	54,000 kgs
556.0 kgs	65,000 kgs
700.0 kgs	83,000 kgs
850.0 kgs	95,000 kgs
1,200.0 kgs	135,000 kgs

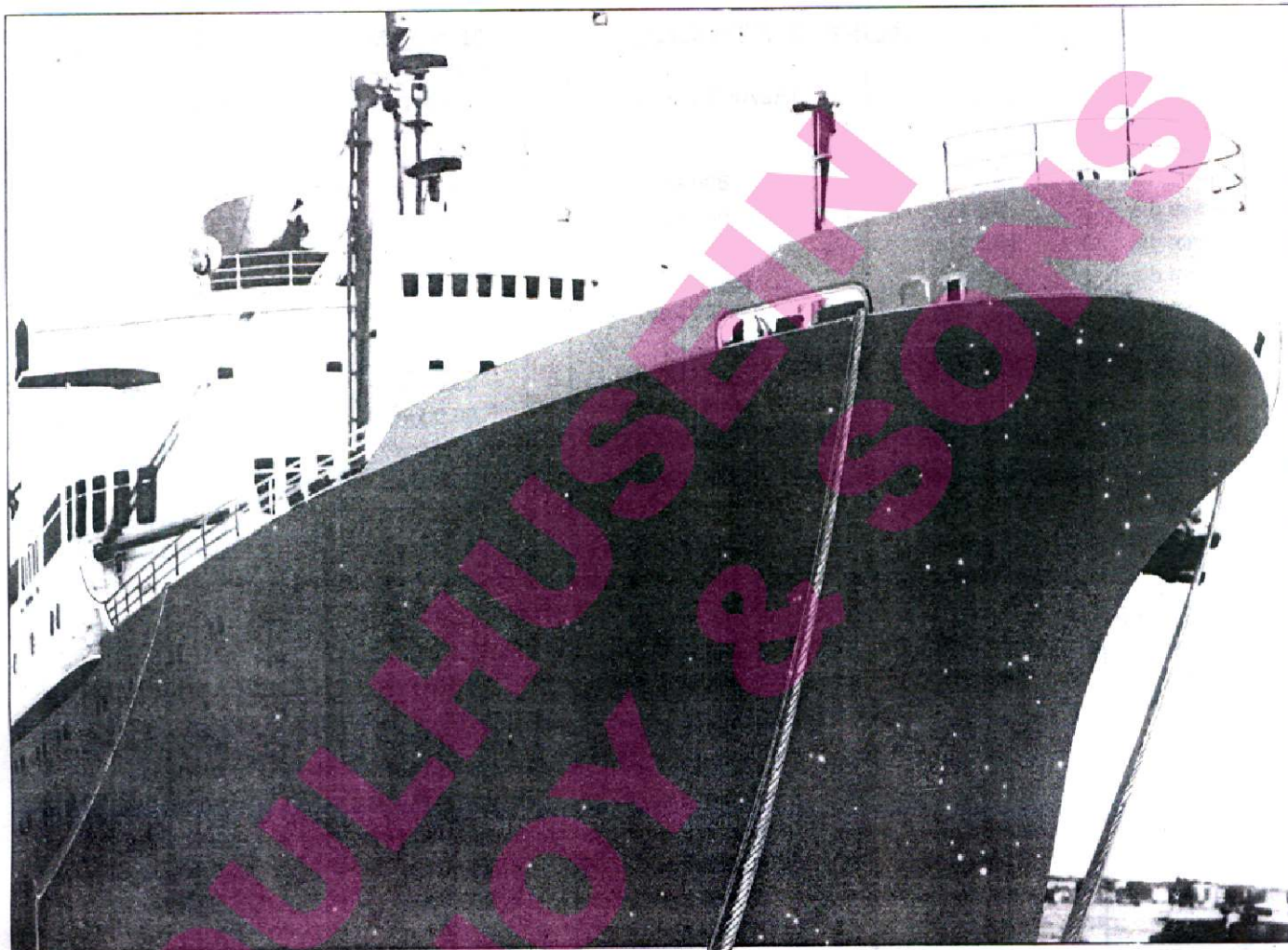
N.B. The above specification weight and breaking load given are approximate only.

MANILA ROPE

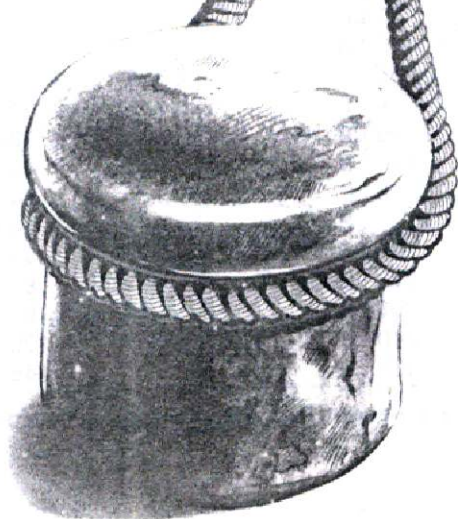
SIZE		WEIGHT	BREAKING LOAD
CIRC.	MM	MANILA ROPES WEIGHT PER COIL	BREAKING STRENGTH
1/2"	4	10 LB	336 LB
3/4"	6	15 LB	622 LB
1"	8	24 LB	909 LB
1.1/8"	9	30 LB	1196 LB
1.1/4"	10	40 LB	1507 LB
1.1/2"	12	55 LB	1793 LB
1.3/4"	14	74 LB	2416 LB
2"	16	95 LB	3395 LB
2.1/4"	18	120 LB	4065 LB
2.1/2"	20	140 LB	5405 LB
2.3/4"	22	160 LB	6409 LB
3"	24	195 LB	7652 LB
3.1/4"	26	225 LB	8895 LB
2.1/2"	28	260 LB	10187 LB
4"	32	340 LB	13056 LB
4.1/2"	36	436 LB	14539 LB

N.B. The above specification weight and breaking load given are approximate only.

Atlas ropes keep a firm grip on every ship.



**FOR A TIGHT
HOLD WITH
THE NECES-
SARY
FLEXI-
BILITY.**



Atlas rope is the synthetic wire rope from Bayer. For strong, dynamic mooring lines. Dimensionally stable, flexible, maintenance-free. Resistant to corrosion and seawater. Mooring lines made of Atlas rope ensure that the ship is lying at the pier calmly and securely. They also have the necessary flexibility when required. Their dynamic properties are unbeatable. Forerunners are no longer required.

Atlas ropes allow landing manoeuvres to be executed quickly and safely with large ships of all kinds. Ask for our information brochure.



**Atlas ropes keep
a firm grip
on every ship.**

With filling thread, cross-laid, 6-strand (R) Z

rope diameter mm	rope circumf. inch approx.	construction (abbreviated) mm	rope weight g/cm approx.	rope breaking force		
				kp approx.	Mp approx.	daN approx.
18	2¼	6 x (6 x 1.6)	220	7000	7.0	6870
22	2¾	6 x (8 x 1.6)	345	11000	11.0	10790
24	3	6 x (9 x 1.6)	400	13000	13.0	12750
26	3¼	6 x (10 x 1.6)	465	15300	15.3	15010
28	3½	6 x (8 x 2.0)	515	16800	16.8	16480
30	3¾	6 x (11 x 1.6)	555	18000	18.0	17660
32	4	6 x (9 x 2.0)	650	22000	22.0	21580
36	4½	6 x (11 x 2.0)	830	26000	26.0	25500
38	4¾	6 x (8 x 2.5)	815	27500	27.5	26980
40	5	6 x (7 x 3.0)	1000	31000	31.0	30410
44	5½	6 x (8 x 3.0)	1250	42000	42.0	41200
48	6	6 x (9 x 3.0)	1480	50000	50.0	49050
52	6½	6 x (7 x 4.0)	1610	54000	54.0	52970
56	7	6 x (8 x 4.0)	2000	66500	66.5	65240
60*	7½	6 x (12 x 3.0)	2160	70000	70.0	68670
62	7¾	6 x (9 x 4.0)	2350	79000	79.0	77500
64	8	6 x (7 x 5.0)	2450	81000	81.0	79460
68	8½	6 x (10 x 4.0)	2800	94000	94.0	92210
70	8¾	6 x (8 x 5.0)	3100	103000	103.0	101040
78	9¾	6 x (9 x 5.0)	3640	120000	120.0	117720
84	10½	6 x (10 x 5.0)	4250	140000	140.0	137340
90	11¼	6 x (11 x 5.0)	5050	165000	165.0	161870
96	12	6 x (12 x 5.0)	5850	190000	190.0	186390



Tipto-Eight® mooring rope retains its strength longer

Under the supervision of Lloyd's Register, the independent Institut für Textil- und Verfahrenstechnik Denkendorf (BRD) conducted a study of the performance of several types of mooring rope. This research found that the performance of Tipto-Eight®, after 750 load cycles, increases rather than decreases! Moreover, Tipto-Eight® retains its strength longer in comparison to polypropylene and nylon. Therefore, Tipto-Eight® gives an extremely high performance at an excellent price/lifetime ratio.

		TIPTO-EIGHT® 8 strand		POLYPROPYLENE 8 strand		NYLON 8 strand	
diam. in mm	circ. in inch	weight 100 m kg	min. br. load in kN	weight 100 m kg	min. br. load in kN	weight 100 m kg	min. br. load in kN
28	3 1/2	37	123	35	99,5	51	154,9
32	4	48	157	46	125,5	66	196,1
36	4 1/2	61	197	58	157,9	84	243,2
40	5	76	238	72	190,2	105	294,2
44	5 1/2	92	288	88	230,0	125	351,1
48	6	109	333	104	266,7	149	411,9
52	6 1/2	128	386	122	309,0	174	478,6
56	7	149	441	142	353,0	203	549,2
60	7 1/2	171	505	163	404,0	232	625,7
64	8	194	571	185	457,0	265	706,1
68	8 1/2	221	647	210	518,0	299	791,9
72	9	246	717	234	573,7	336	882,6
80	10	305	883	290	706,1	414	1078,7
88	11	369	1063	351	851,0	502	1284,7
96	12	438	1255	417	1004,0	598	1510,2

Tested by:

Lloyd's Register of Shipping

Bureau Veritas

Det Norske Veritas

Germanischer Lloyd

American Bureau of Shipping

American Petroleum Institute

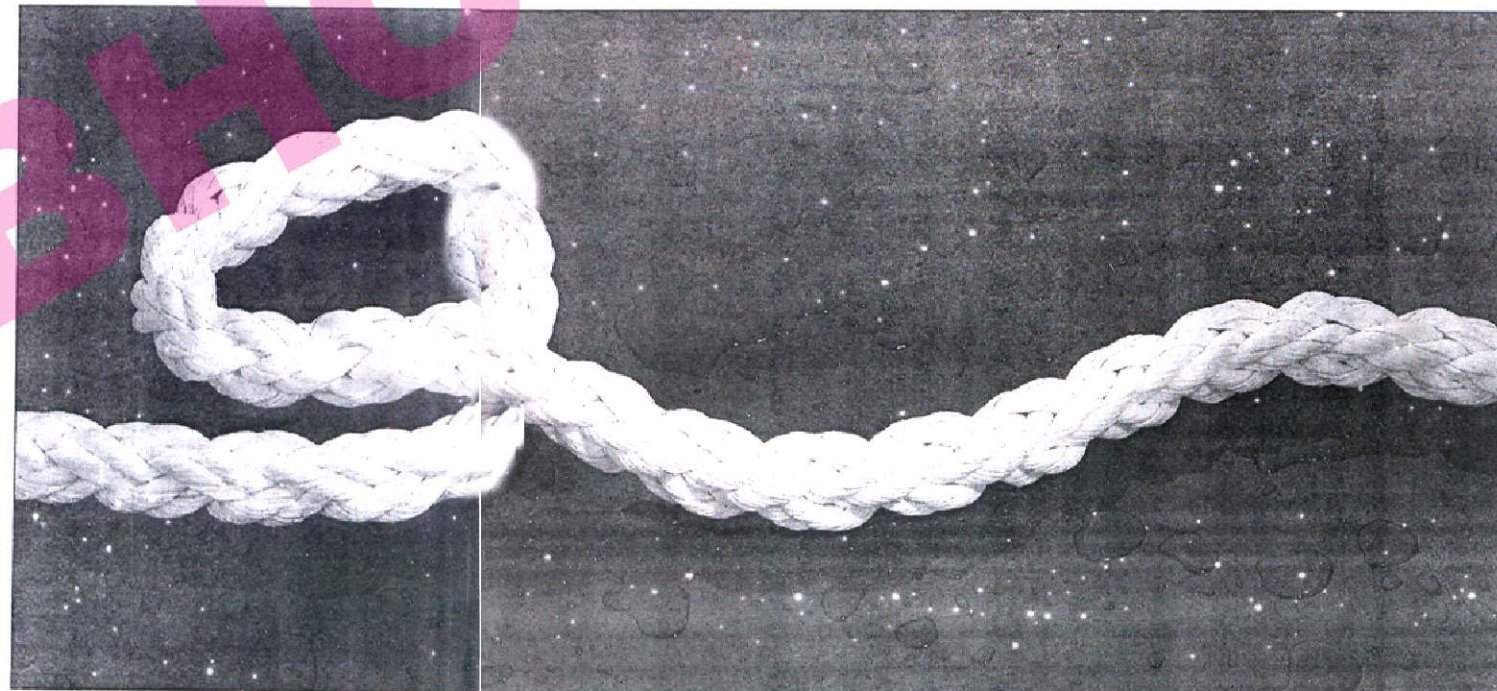
Registro Italiano Navale
Sjöfartsdirektoratet

Tipto-Eight® is standard supplied in lengths of 200 m. as from 7" circ.

Tipto-Eight®

the mooring rope with 8 attractive advantages.

- 1) Tipto-Eight® retains its **strength longer** in comparison to polypropylene and nylon.
- 2) The high breaking load of Tipto-Eight® means **greater safety** for the user.
- 3) Tipto-Eight® has a **high abrasion and UV resistance**.
- 4) Tipto-Eight® has a S.G. of 0.94, hence it **floats**.
- 5) The **high visibility** colour of Tipto-Eight® makes it more easily seen, both in the daytime and at night.
- 6) The **energy absorption** of Tipto-Eight® when wet is similar to that of nylon when wet and twice that of polypropylene.
- 7) Tipto-Eight® has an excellent **price/lifetime ratio**.
- 8) The **breaking load** of Tipto-Eight® **increases** with use.



Tipto-Eight® mooring rope:
durable strength all along the line!

Also available for general use on board Tiptofour® and Tiptothree®. Made of the same composite high tenacity yarns as Tipto-Eight®.

Characteristics:

- high abrasion and UV resistance
- high energy absorption
- high breaking load

